



GMT MONTHLY MEMBERSHIP PROGRESS REPORT

Results as of: 6/30/2020

Multiple District 33

LOCATION: MASSACHUSETTS

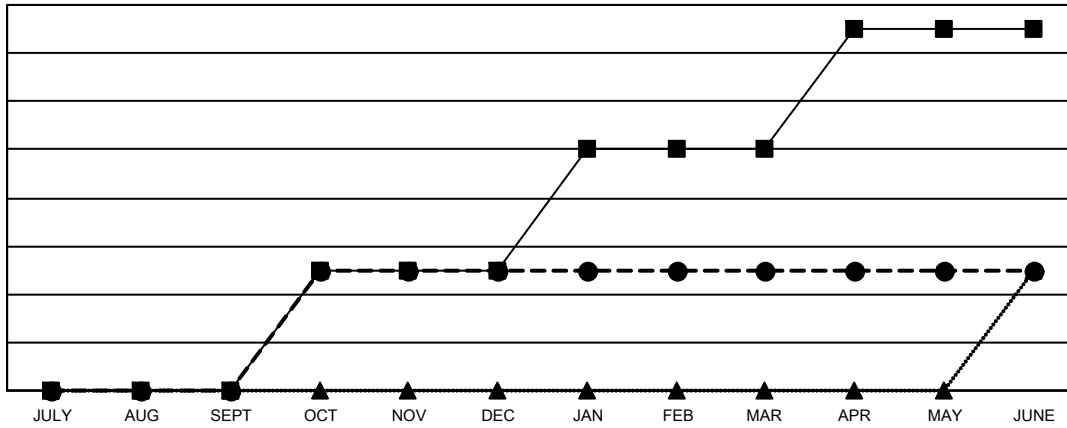
GMT: OPEN

GMT CA 1

Clubs			
RESULTS FOR 2019-2020			
QUARTER	NEW CLUB GOAL	NEW CLUBS	DROPPED CLUBS
JULY/AUG/SEPT	0	0	2
OCT/NOV/DEC	1	1	1
JAN/FEB/MAR	1	0	0
APR/MAY/JUNE	1	0	1

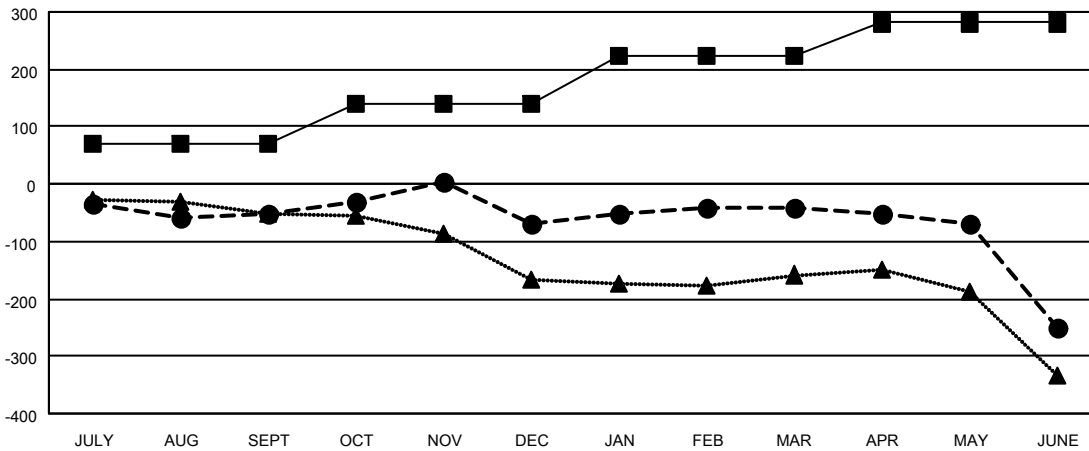
Members			
RESULTS FOR 2019-2020			
QUARTER	MEMBER GROWTH NET GOAL	MEMBER GROWTH ACTUAL	DROPPED MEMBERS ACTUAL (including transfers)
JULY/AUG/SEPT	70	100	134
OCT/NOV/DEC	71	180	191
JAN/FEB/MAR	81	149	116
APR/MAY/JUNE	59	69	257

GOALS AND ACTUAL NEW CLUBS CUMULATIVE



- - CURRENT YEAR GOALS FOR NEW CLUBS
- - CURRENT YEAR ACTUAL NEW CLUBS
- ▲ - LAST YEAR ACTUAL NEW CLUBS

GOALS AND ACTUAL MEMBERS CUMULATIVE



- - MEMBER GROWTH NET GOAL
- - MEMBER GROWTH ACTUAL
- ▲ - LAST YEAR MEMBERSHIP ACTUAL

DROPPED CLUBS: 4	126 CLUBS OF 221 ADDED 1 OR MORE NEW MEMBERS	GENDER DISTRIBUTION
DROPPED MEMBERS		MALE 4,443 (65.29%)
DECEASED 95		FEMALE 2,362 (34.71%)
CLUB CANCELLED 18	CLICK HERE FOR CUMULATIVE MEMBERSHIP DATA	TOTAL FAMILY UNIT MEMBERS 1,111
OTHER 587		FAMILY MEMBERS PAYING HALF DUES 567
TOTAL 700		